

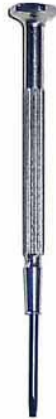


# HOW TO REPLACE YOUR PS2 LASER

(FOR VERSIONS 12)



## **RECOMMENDED TOOLS:**



**#1 SLOTTED  
SCREWDRIVER**



**#1 PHILLIPS  
SCREWDRIVER**



- 1) #1 Phillips screwdriver (for tiny screws)
- 2) #1 Slotted screwdriver (used for prying)



- 3) 15 Watt soldering iron ([Radio Shack Catalog #: 64-2051](#))
- 4) (Optional) a small jar (to hold removed screws)

**NOTE: Having the right tool for the right job will make all the difference between a pleasant experience vs. a nightmare!!!**

**THERE ARE MORE TOOL IMAGES IN THE FULL MANUAL!!!**

## **BEFORE YOU BEGIN:**

Make sure you are grounded before you begin installing your mod chip; you must ground yourself by either using a grounding strap ([Radio Shack Catalog #: 276-2370](#)) or by touching something metal. Make sure that you are working on a non-conductive surface (i.e. wood, glass...etc.). **NOTE: ALL TEXT IN BLUE IN THIS DOCUMENT ARE URL LINKS FOR YOUR REVIEW!!!**

**THERE ARE MORE HELPFUL TIPS IN THE FULL MANUAL!!!**

### **SOLDERING**

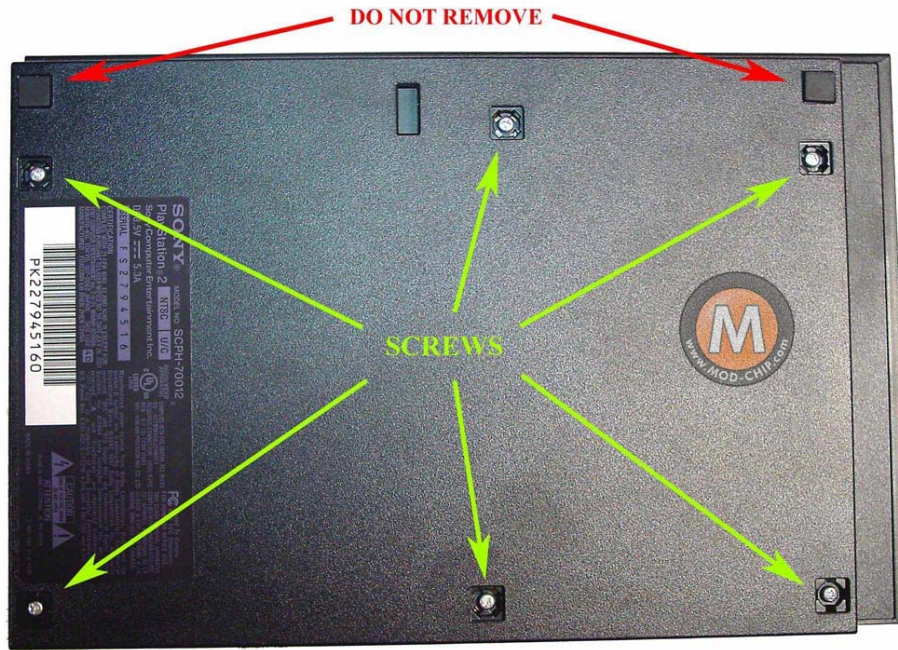
If you are a novice when it comes to soldering, then you should review the [soldering tips](#) web site first. The main thing to remember before you begin your project is to:

- 1) Use a low wattage soldering iron
- 2) Never hold the tip of the soldering iron against any electronic device for more than 3 seconds (too much heat can cause irreparable damage to electronic components).
- 3) Always tin what you are soldering to before attempting to solder a wire to it
- 4) Keep your soldering iron tip clean at all times

### **IMPORTANT THINGS TO REMEMBER**

- 1) **Never route wires over/under IC chips, always route your wires around them**
- 2) **Never cross any wires more than once (this should happen only by the mod-chip)**
- 3) **Keep your ground wire as short as possible (2cm)**
- 4) **Use the 22AWG wire (supplied) for both power and ground signals**

Pay attention to which cover is rubber and which are made of plastic. Remove the 6 screws with your #1 Phillips screwdriver as shown below in figure #3. **NOTE: DO NOT REMOVE THE FRONT RUBBER FEET; they are permanently glued on!!!**



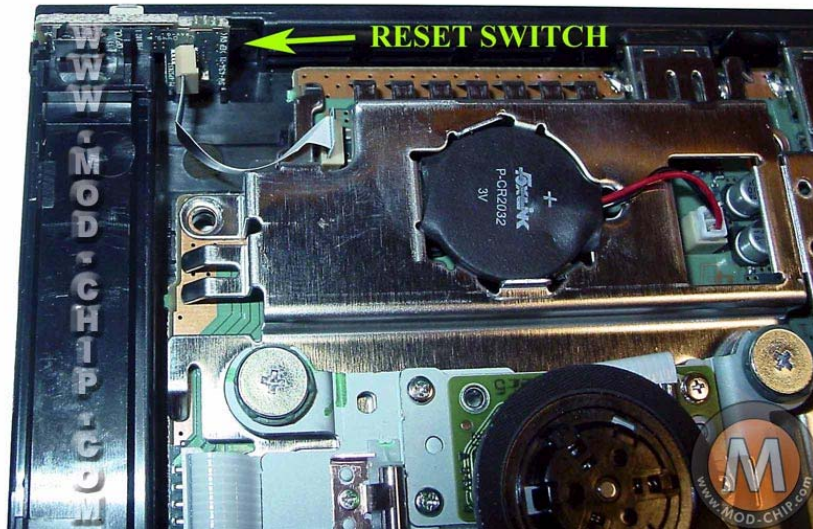
**FIGURE #3**

Turn over the PS2 console and remove the top cover by lifting on the back a little and gently pushing the top cover towards the front (to clear the RESET switch) and then by lifting upwards as shown below in figure #4. **NOTE: be careful not to damage the reset switch PCB (shown below in figure #5)!!!**



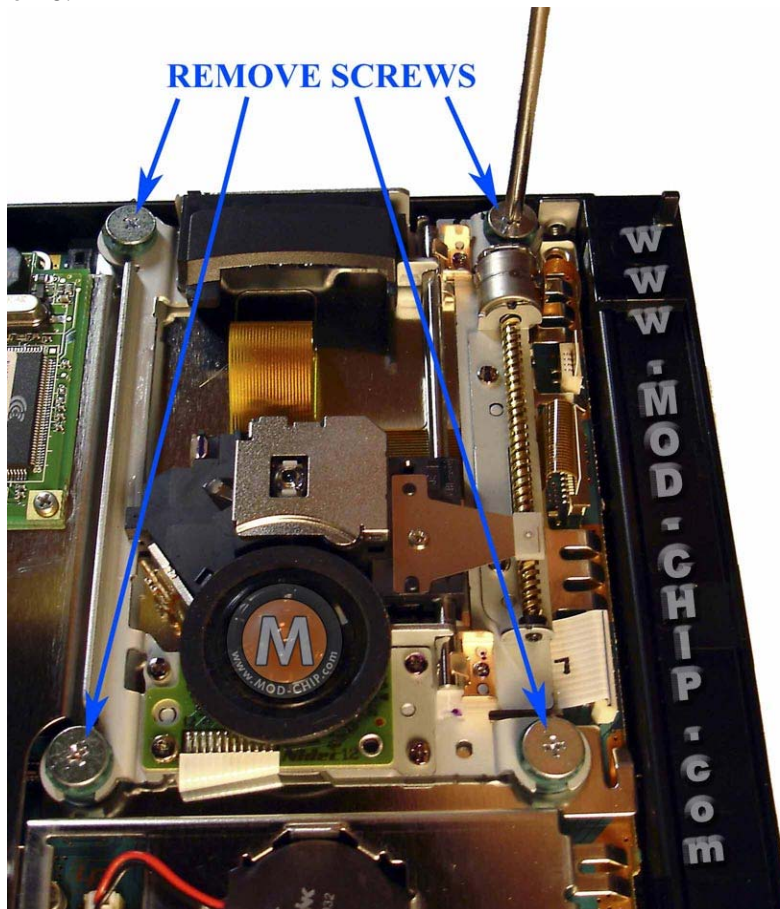
**FIGURE #4**





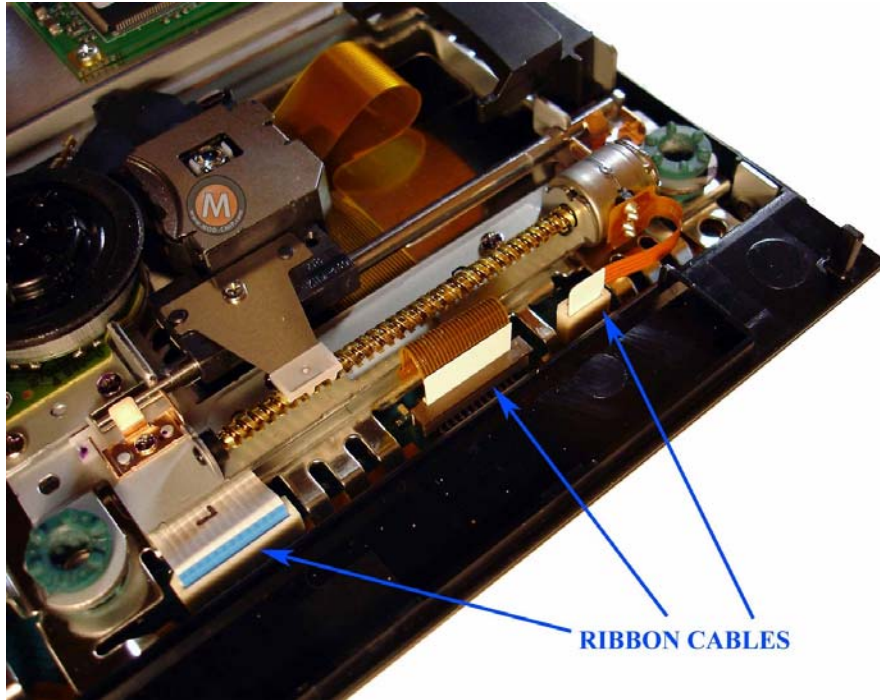
**FIGURE #5**

Now remove all 4 DVD drive chassis screws with your #1 Phillips screwdriver as shown below in figure #6.



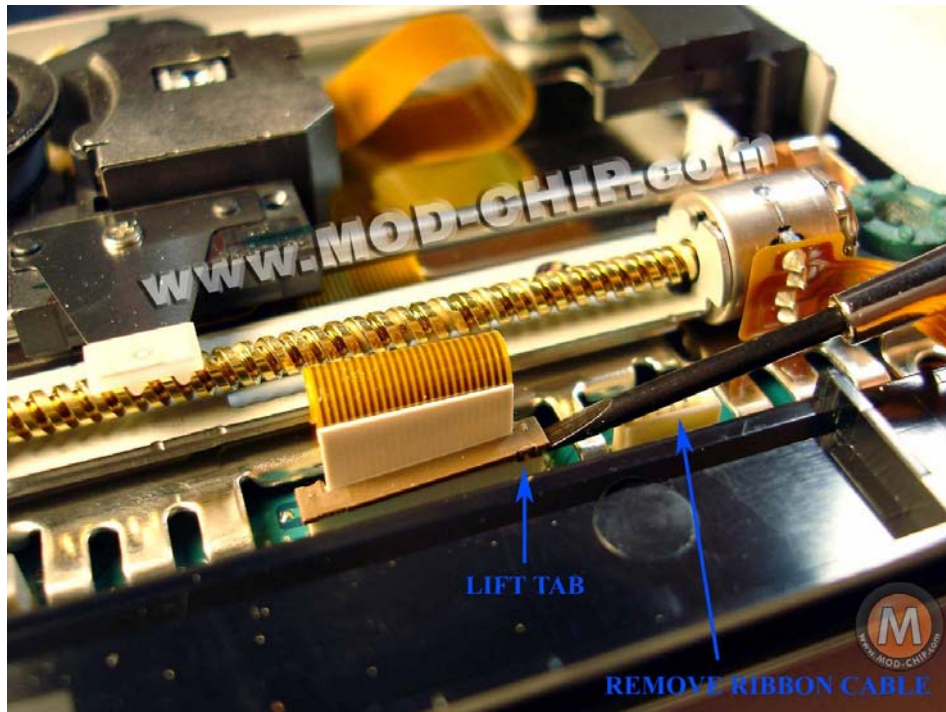
**FIGURE #6**

Next, the DVD drive ribbon cables need to be removed as shown in figure #7.



**FIGURE #7**

Remove the drive motor ribbon cable by gently pulling upward on it. Now remove the laser ribbon cable by first lifting up on its locking tab as shown below in figure #8.



**FIGURE #8**



Gently lift the DVD drive on its side as shown below in figure #9.



**FIGURE #9**

As you can see in figure #10, the laser ribbon cable is glued-down to the metal shield. Gently pull upward on the ribbon cable to separate it from the metal shield.



**FIGURE #10**

**THIS IS JUST A  
SNAPSHOT OF THIS  
MANUAL, A FULL  
VERSION OF THIS  
MANUAL IS AVAILABLE  
TO MOD-CHIP.COM  
CUSTOMERS ONLY.**